



**WANT TO INSTALL SOME POSTS?**

**DON'T WANT TO DIG HOLES?**

**THEN.....**  
**OZ-POST** THE ORIGINAL AND THE BEST  
 METAL POST SUPPORTS  
**IS THE ANSWER!!**

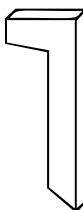
**NO DIGGING**

**NO CONCRETE**

**NO ROT**



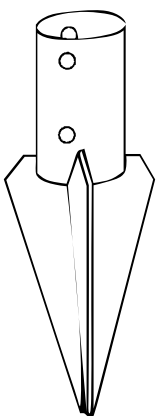
**SJH950**  
 (FOR JACK HAMMER INSTALLATION)



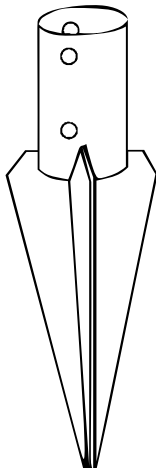
**TS65**  
 (WEDGE)



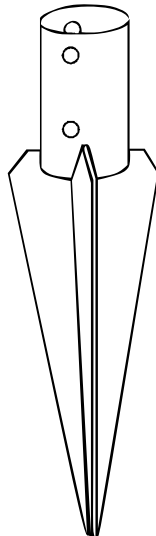
**DOLLY**  
 (FOR MANUAL INSTALLATION i.e. WITH SLEDGE HAMMER)



**S450**



**S600**



**S750**

- \* One person installation takes only a few minutes.
- \* No digging or concreting required.
- \* Retrievable and re-usable, and they don't leave a hole!
- \* No soil removal.
- \* Less equipment. Big \$\$\$ savings.
- \* Hundreds of thousands installed across Australia!
- \* Shorter length posts required.
- \* Wooden posts don't rot.
- \* Oz -Posts are environmentally friendly.

**EYE SPY SIGNS** are the Tasmanian agent for oz-posts.

**263 Kennedy Drive, Cambridge**  
**Ph. 03 6248 5544**  
**Fx. 03 6248 4954**  
 Website: [eyespy signs.com.au](http://eyespy signs.com.au)  
 e-mail: [sales@eyespy signs.com.au](mailto:sales@eyespy signs.com.au)

**FREECALL**  
**1 800 004 779**

we accept

